



Romag RSM6 (60) PV modules

Romag RSM Series Polycrystalline Modules

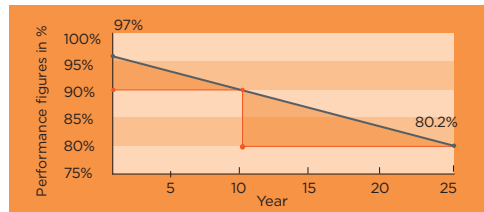
Suitable for a wide range of projects, Romag's new lighter weight and improved efficiency RSM6 Series PV modules come in a choice of white or black Tedlar and encompass Romag's extensive glass processing experience to produce high quality photovoltaic modules using the latest materials.

Available in various output options, the modules offer a flexible and cost effective PV option for retrofit, new build and stand alone applications.

The RSM6 Series features textured low iron glass as the outer component of the laminate to reduce reflection which increases light transmission to the cells and improves efficiency. Bypass diodes are also used to minimise potential power loss caused by shading.

Linear Performance Warranty

- 10 year product warranty
- 25 year linear power warranty



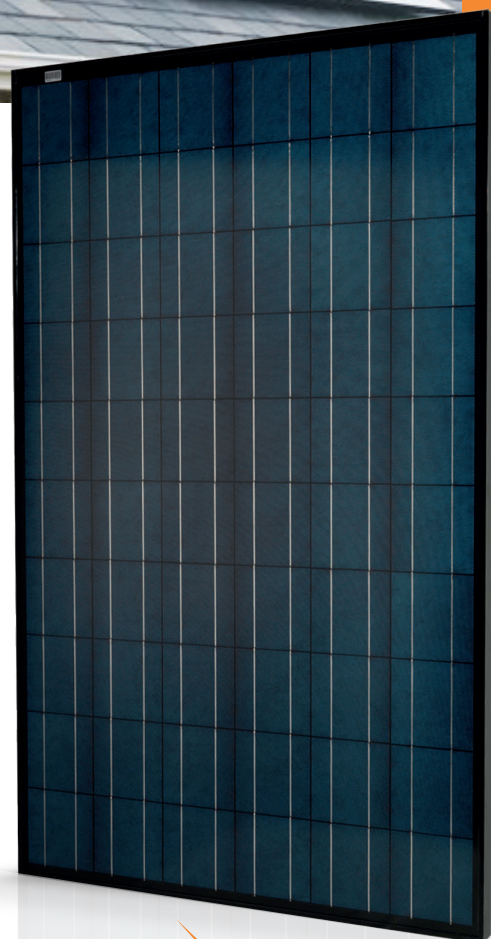
- Romag linear performance guarantee
- Other manufacturers stepped performance guarantee

Why chose Romag PV Modules?

- **Wide range of PV products to meet all requirements**
- **High quality, UK manufactured - exempt from EU import duties**
- **MCS certified and BSI Kitemark**
- **Reliable Pilkington Sun Plus glass**
- **Bypass diodes to minimise power loss when shaded**
- **10 year manufacturer's workmanship guarantee**
- **25 year linear performance guarantee**
- **Experienced and knowledgeable staff**
- **Flexible and responsive customer services**

Key features

- **Module efficiency up to 15.9%**
- **Acid etched cells for especially high current yields**
- **Black anodised aluminium frames**
- **Choice of black or white Tedlar**
- **Output: connection cable with locking connector**
- **Available as 'PV Kits'**



The information provided in this publication, including product warranty and performance specification, is subject to change without notice and should not be used as the definitive source of information for final system design. Further technical and warranty information can be found on our website (www.romag.co.uk) or by contacting our technical department.

Romag Limited

Leadgate Industrial Estate, Leadgate,
Consett, Co. Durham, England, DH8 7RS

Tel: **+44 (0) 1207 500 000**

Email: **sales@romag.co.uk**

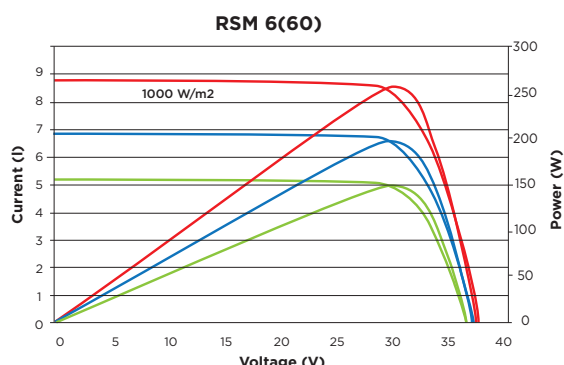
or visit **www.romag.co.uk**.

Romag RSM6 (60) PV modules

Romag

250wp Staybrite Sun Roof Module

Characteristic IV/Power Curves against Incident Radiation (at 25°C)



Romag RSM6 (60) Electrical Characteristics

P_{mp} W	250
V_{mp} V	30.8
I_{mp} A	8.2
V_{oc} V	39
I_{sc} A	8.6
FF%	75.3
Efficiency%	15.5

Important features

- Suitable for use in systems up to 1000V DC
- Maximum applied load to front surface of 5400 Pa
- Manufactured in our ISO 9001: 14001 & 18001 certified factory
- Factory regularly audited by BSI and IPSOL
- Repetitive cycling between -40°C and +80°C at 80% relative humidity
- Simulated impact of 25mm hail at terminal velocity
- 3000V DC frame/cell string isolation test
- 3 bypass diodes to minimise power loss caused by shading

Romag PV kits

To make life easier for installers we also offer a range of standard PV kits. Kits include all components required for installation including Romag RSM6 Series Modules, mounting rails, matched inverter, isolator switches, all packed on a single pallet and ready for installation.

Quality

Romag's processes are also certified by BSI to the latest Quality Standard BSEN ISO 9001:2008 and Environmental standard ISO 14001.

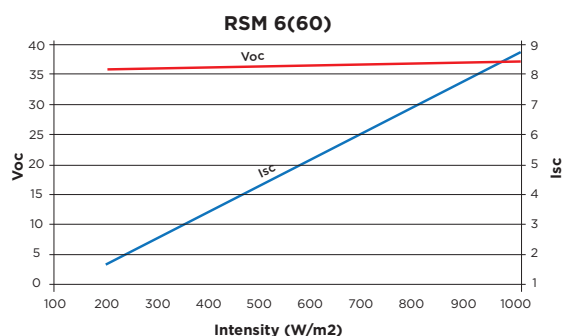
Safety

RSM6 Series modules are certified by IPSOL in the UK in accordance with IEC 61215 Edition 2 and IEC 61730. Manufactured in an ISO18001 factory.

Maintenance

Romag RSM6 Series PV modules are passive with no moving parts to wear out and if installed at an angle of over 20° are self cleaning in most locations. We do however, recommend an inspection of the modules at least once a year and any dirt build up should be cleaned off.

Characteristic Curves: I_{sc}, V_{oc} vs Radiation Intensity



Electrical Data @ NOCT 800W/m2 20C wind 1m/s

W_p	250
V_{mp}	182
I_{mp}	28.2
V_{oc}	6.5
I_{sc}	35.4
	7.0

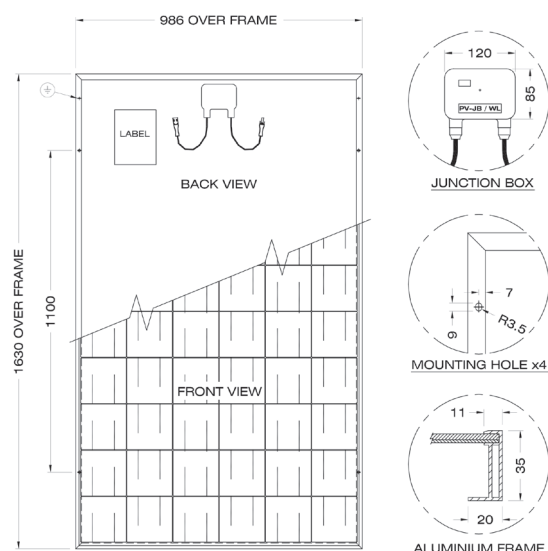
Temperature Characteristics

Coefficients:	
Power	-0.45%/°C
Voltage	-0.49%/°C
Current	0.38%/°C

NOCT = 45°C

Mechanical Characteristics

Solar Cells	Multicrystalline 156x156 mm
Dimensions	Length 1630 mm Width 986 mm
Weight	19kg
Front Glass	3.2mm
Frame	Anodized Aluminium Alloy
Junction Box	IP 65 rated
Connector	MC4



The information provided in this publication, including product warranty and performance specification, is subject to change without notice and should not be used as the definitive source of information for final system design. Further technical and warranty information can be found on our website (www.romag.co.uk) or by contacting our technical department.



Romag Limited

Leadgate Industrial Estate, Leadgate, Consett, Co. Durham, England, DH8 7RS

Tel: +44 (0) 1207 500 000

Email: sales@romag.co.uk

or visit www.romag.co.uk.