

**SCHLETTER**  
*The Solar Mounting Group*

# ALUTILE

PRODUCT SHEET





## ALUTILE

### THE TILE SUBSTITUTE MADE OF ALUMINIUM

To mount a solar system on the roof, roof hooks are normally used, which are screwed to the rafters under the roof tiles. To do this, the roof tiles usually have to be cut out.

AluTile replaces a complete roof tile and thus makes the machining of tiles unnecessary for numerous tile shapes. Due to the compact design of AluTile, the single hook can transfer very large loads into the roof structure, meaning the total number of hooks can be minimised. In this way, AluTile is compatible with a lot of common types of roof cladding.

With AluTile, both horizontal and vertical profile assembly is possible. The standard roof pitch of roof tiles must be observed in accordance with the rules for roof coverings of the Central Association of the German Roofing Trade (Zentralverband des Deutschen Dachdeckerhandwerks). Installation below 10° roof pitch is generally not permitted.

- **Quick and easy installation**
- **Especially for areas with heavy snow loads**
- **Suitable for many types of roof tiles due to flexible connection apron**
- **Direct load on rafters**
- **Cost optimisation through reduction in the number of fixing points**
- **25-year warranty\***



Arrangement of module support profiles

### SPECIAL FEATURES

AluTile is made of aluminium and therefore has an almost unlimited service life. In addition, using AluTile prevents hairline cracks or tile breakage in the roof cladding in the event of excessive loads, e.g. due to snow. The Rapid2+ attachment ensures simple and secure connection to Schletter standard profiles.

\*in accordance with our warranty conditions



## TECHNICAL DATA

<b>Material</b>	Fixing elements, screws: Stainless steel 1.4301 Base material: Aluminium Seals: EPDM
<b>Logistics</b>	• Quick and easy installation • Maximum degree of prefabrication

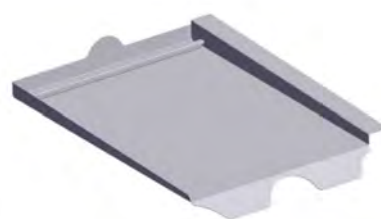


## ROOF HOOK

Replaces a complete roof tile. Please order roof hook set separately. Especially for areas with heavy snow loads. System hooks with sheet metal replacement tiles in aluminium, EPDM screw seal, load support in plastic with A2 stainless-steel screw.

## SHEET METAL REPLACEMENT TILES

MANUFACTURERS	ITEM NO.	PU:10
<b>Braas</b>		
Frankfurt pantile	103005-003	
Taunus pantile	103005-011	
Harz pantile	103005-022	
Tegalit	103005-025	
Topas 13V	103005-067	
<b>Erlus</b>		
Interlocking tile	103005-002	
Large interlocking tile	103005-007	
Large interlocking tile XXL	103005-010	
E58	103005-015	
Forma	103005-024	
Linea	103005-049	
Reform pantile XXL	103005-057	
<b>Eternit</b>		
Heidelberger	103005-006	
<b>Meindl</b>		
Rustico	103005-004	
MZ3 NEW	103005-112	



Other sheet metal replacement tiles are available on request.

## ALUTILE ROOF HOOK SET

Consists of system hook, screw seals and load support

103006-000 AluTile roof hook set	PU:10
----------------------------------	-------



More information at: [www.schletter-group.com](http://www.schletter-group.com)



The background of the entire page is a complex geometric pattern of overlapping triangles in various shades of blue and teal. In the upper left, there is a solid orange triangle. Overlaid on this pattern are two large, curved, semi-transparent images of solar panels, showing their grid-like structure and curved edges. The text is positioned in the upper left, within the orange area.

# **SCHLETTER SOLAR GMBH**

Alustraße 1  
83527 Kirchdorf  
GERMANY

[www.schletter-group.com](http://www.schletter-group.com)