

Anker SOLIX X1

Hybrid Energy Storage System



LinkedIn



Website

Email: support@anker.com

Phone: (UK) +44 (0) 1616 056 301 (DE) +49 (800) 000 2522

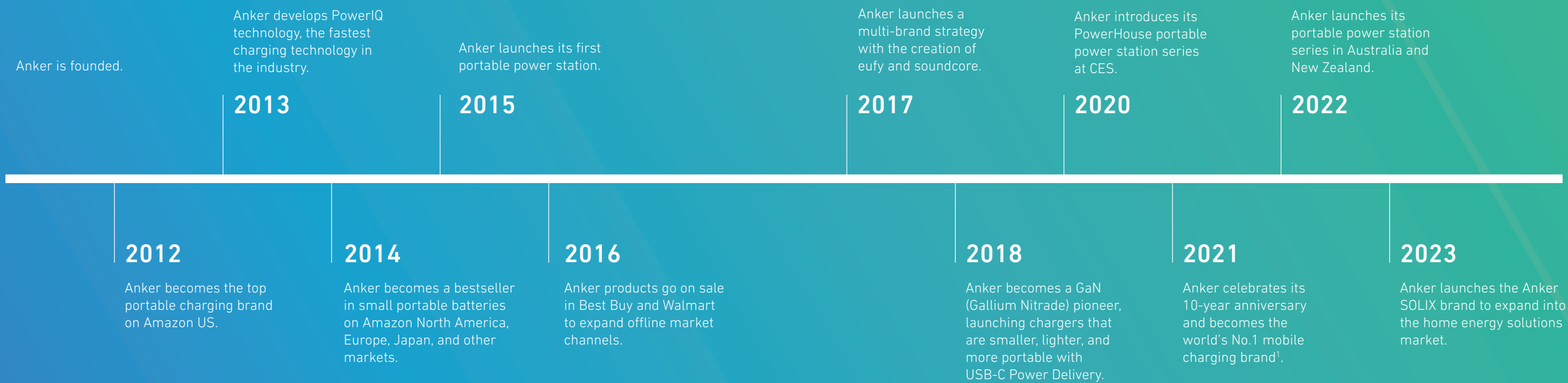


Anker at a Glance

Anker Innovations is a global leader in smart charging technology and a developer of consumer products for life at home, in the car, and on the go.

Since its founding in 2011, Anker products have sold to more than 140 countries and regions around the world, with more than 140 million users.

Join us as we create powerful and limitless possibilities.



¹Anker is the No. 1 mobile charging brand in the world in terms of the retail sales value in (3 consecutive years of) 2020, 2021, and 2022.
Data source: Euro Monitor International (Shanghai) Co., Ltd., measured in terms of retail value sales in 2020, 2021, and 2022, based on research conducted in October 2023. Mobile charging brands are defined as brands if more than 75% of their retail sales are contributed by mobile phone charging products. Mobile phone charging products include chargers, wireless chargers, power banks, and charging cables, and these accessories can also be used for other consumer electronics devices.

Anker SOLIX Introduction

Today, technology is integrated into our life from work to play, powering us on to maximize the way we live. But we are slowly losing the power to traditional grid power sources, depleting natural resources and causing sustainability issues, giving us no confidence to power the future on.

Anker SOLIX is here to take back the power with you. With intuitive solar and energy storage technology, giving you the reliable power to go on with the life you want.

You can enjoy all delicacies under the sun, or turn darkness into fun when the darkest hours come, if you feel like working wherever you please, or playing your heart out anywhere with ease. Choose to roam free to the wonders of the earth, or enjoy an evening in the woods with the ones you love. Create your haven with human-centric power that goes on forever, to empower future generations to live freely.

Whatever you choose in life, we are always there to ensure that you live in power.

Anker SOLIX. Live In Power.

Live In Power

eXtreme Series



Effortless Series



Flex Series



Camping Series



Power for the Extreme



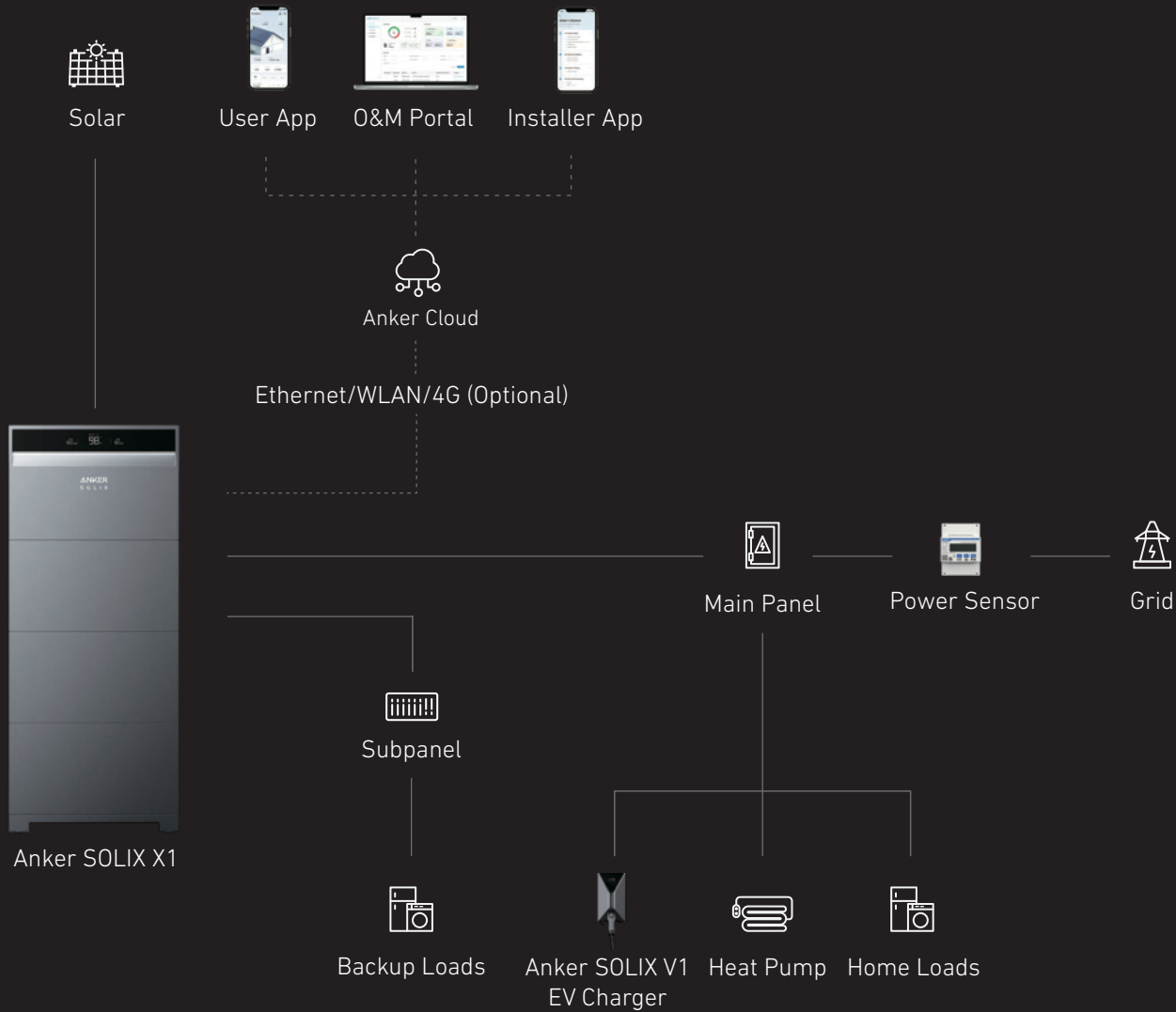
Reduce Utility Bills



24/7 Power Backup



Self-Consumption



What Anker SOLIX Offers

Anker SOLIX X1 Power Module 5-12kW (Three-Phase) 3.68-6kW (Single-Phase)	Anker SOLIX X1 Battery Module	Anker SOLIX V1 EV Charger Optional	Power Sensor 100A 250A (Optional)	O&M Portal	User App	Installer App	WLAN Dongle	Mobile Dongle Optional

- Notes:
1. The image of Hybrid Three-Phase Energy Storage System is for reference only. The actual product may differ upon release.
 2. Images are for demonstration purposes only. Please refer to the Anker SOLIX website for product availability.
 3. For WLAN, use the included WLAN dongle. It also supports an Ethernet connection.
 4. 4G communication functions are available through Anker Mobile Dongle (optional).

All-in-One Design



Inspired by the Break of Dawn



Elegance for Any Home



15cm Ultra Thin

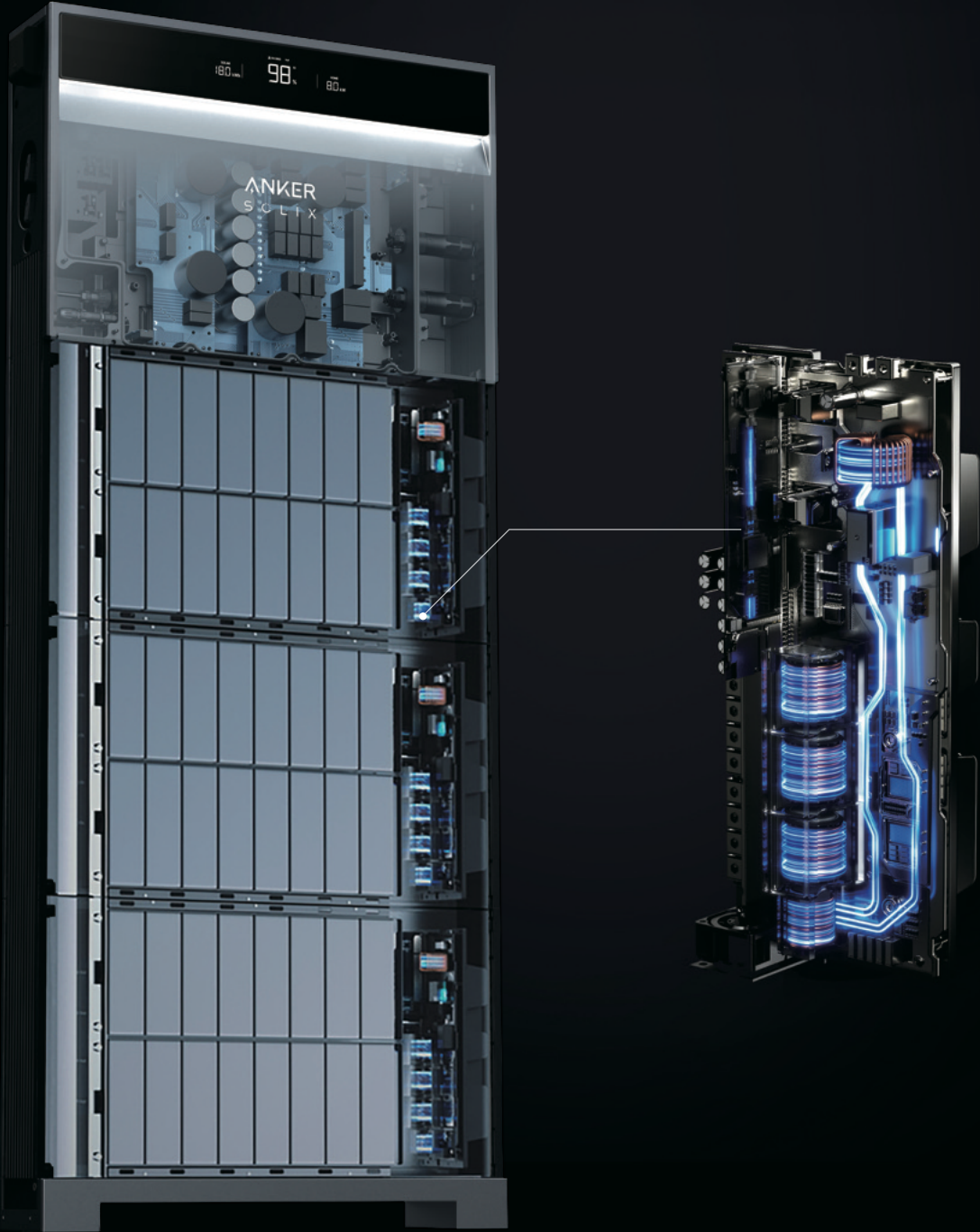


Starry Night Screen



2,000kWh+ More Power¹

With Innovative Energy Optimizer



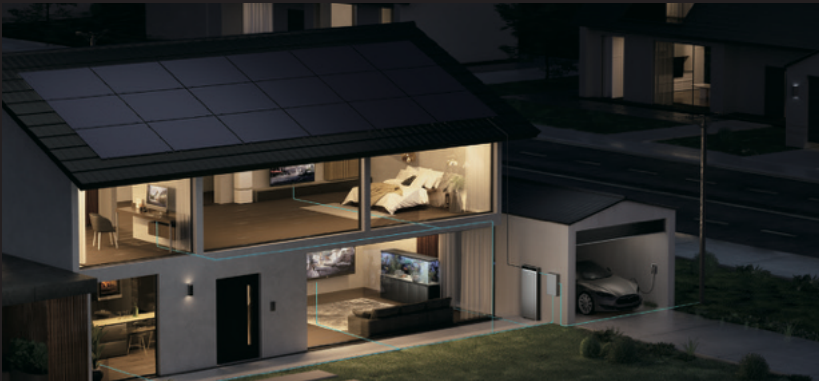
Make Your Home Self-Sufficient

Modular Design

5kWh-180kWh¹



Unites Your Home Energy



24/7 Whole-Home Backup

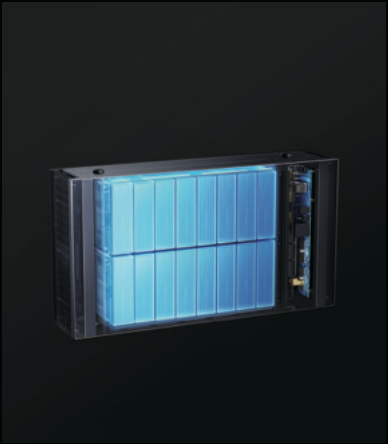
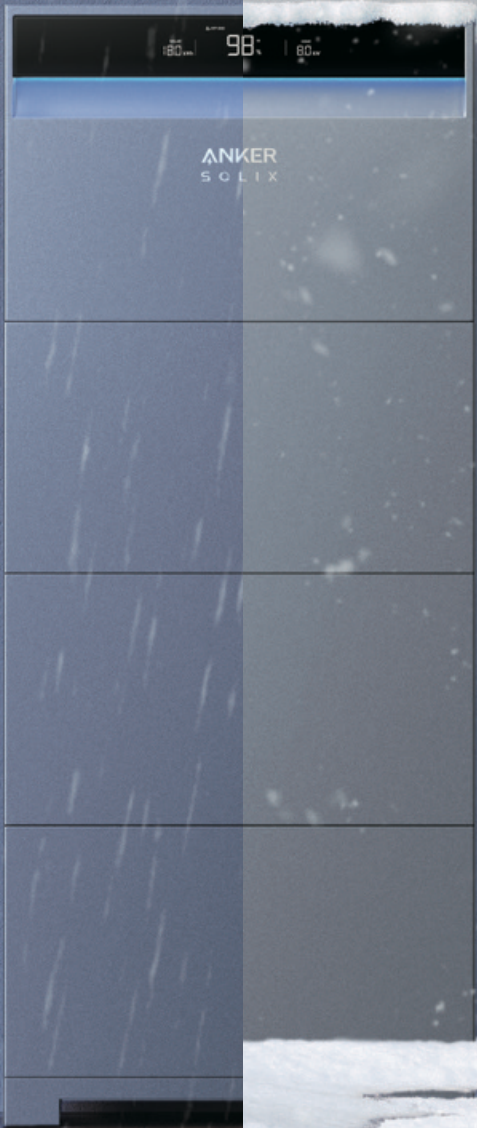
10 ms UPS Switchover



¹Refers exclusively to the Three-Phase Hybrid system, which supports up to six systems in parallel and is planned for release in Q4 2025. The Hybrid Single-Phase system will support parallel connections of up to three systems and is planned for release in Q2 2025. In off-grid scenarios, the Three-Phase system supports up to two systems in parallel, while the Single-Phase system supports only single-system output. Please visit AnkerSOLIX.com for the most up-to-date information on product availability and specifications.

Reliable System with 10-Year Warranty

Extreme Performance from
-20°C to 55°C



LFP Batteries



Auto-Isolation of Abnormal Batteries



0V Shutdown

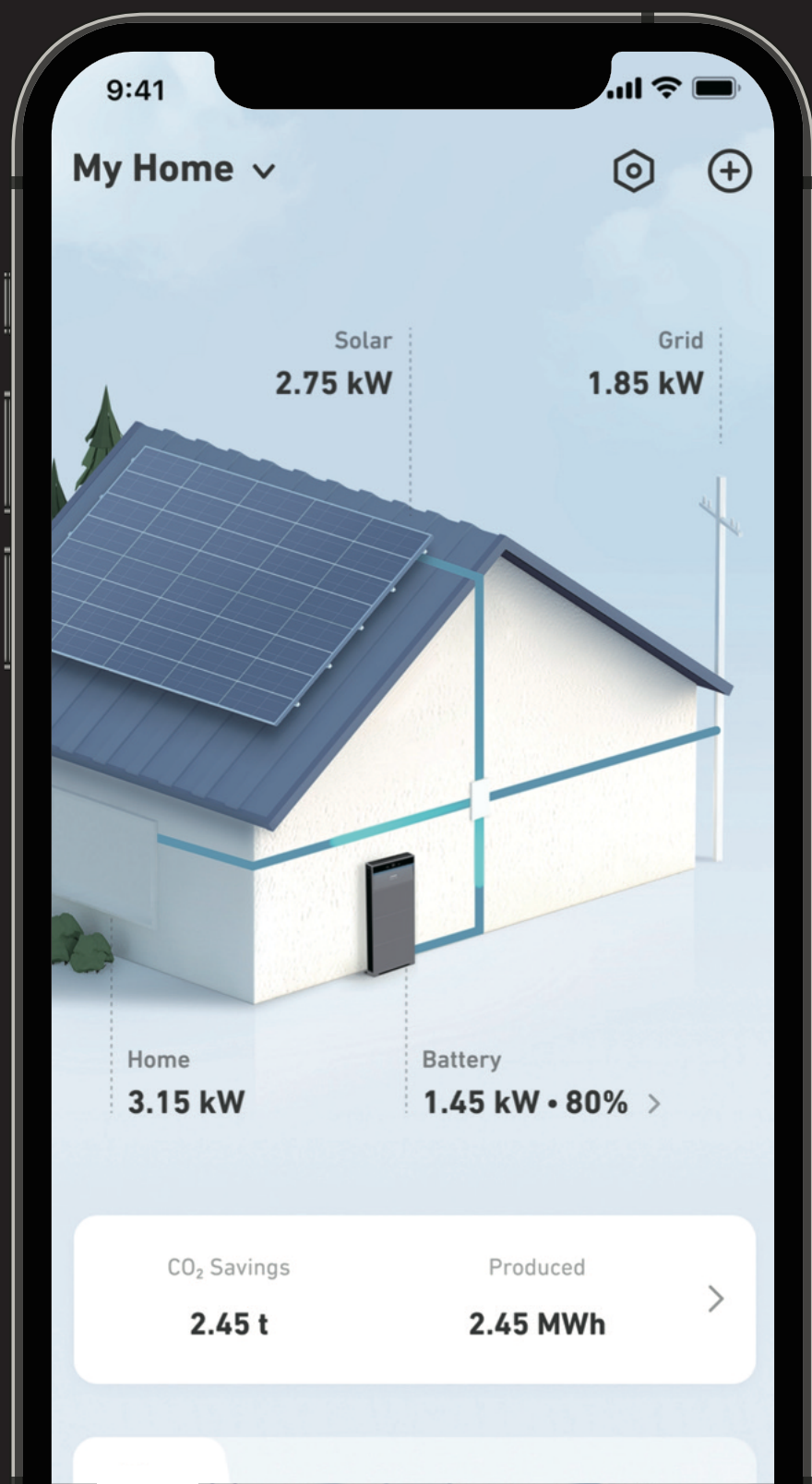
IP66



Enjoy the Most User-Friendly Interface, the Anker App

UX
DESIGN
AWARDS

nominated
2024



Intuitive User Experience

Anker SOLIX Professional
O&M Portal



Anker App



Manage All
Your Data



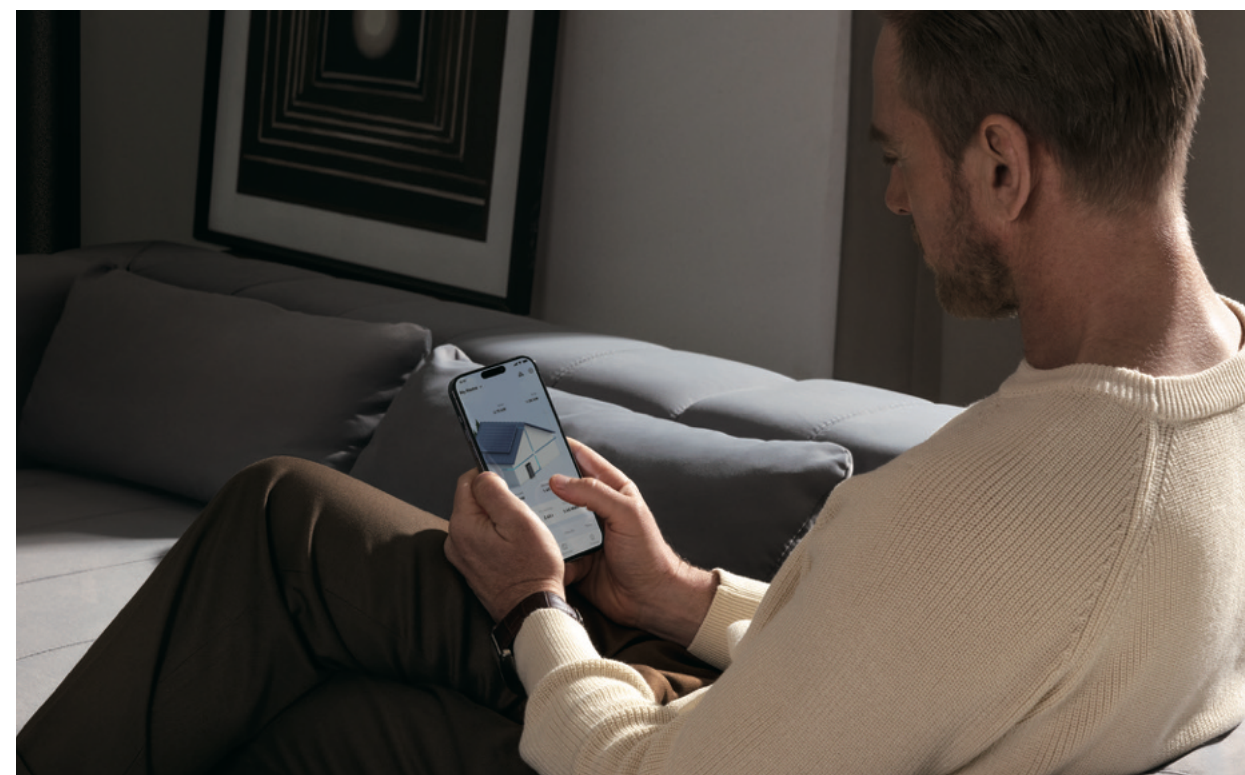
Summarize by
History



Customized
Data Viewing



Earnings at
Your Fingertips



| Power Module Hybrid Single-Phase Energy Storage System



Model	X1-H3.68K-S	X1-H4.6K-S	X1-H5K-S	X1-H6K-S
	Battery Input			
Battery Type	LFP			
Charge Voltage Range	390 - 550VDC			
Discharge Voltage Range	370 - 500VDC			
Battery Capacity	5 - 30kWh			
	PV Input			
Max Input Power	7.36kW	9.2kW	10kW	12kW
Max Input Voltage	600VDC			
MPPT Voltage Range	80 - 550VDC			
Start-Up Voltage	75VDC			
Rated Input Voltage	360VDC			
Max Input Current	16 / 16ADC			
Isc PV Array Short Circuit Current	20 / 20ADC			
Number of MPPTs	2			
Number of Strings per MPPT	1			
	AC Output (On-Grid)			
Rated Output Power	3.68kW	4.6kW	5kW	6kW
Max Output Apparent Power	4kVA	5kVA	5.5kVA	6.6kVA
Max Units in Parallel	3			
Rated Output Voltage	220 / 230 / 240V			
Rated Frequency	50 / 60 Hz			
Power Factor	0.8 ind - 0.8 cap			
THDI (@Rated Power)	< 3%			
	AC Output (Off-Grid)			
Rated Output Power	3.68kW	4.6kW	5kW	6kW
Max Output Apparent Power	4kVA	5kVA	5.5kVA	6.6kVA
Peak Output Apparent Power (Duration)	7.2kVA (10 s)	10kVA (10 s)	10kVA (10 s)	10kVA (10 s)
Max Units in Parallel	3			
Rated Output Voltage	220 / 230 / 240VAC			
Rated Frequency	50 / 60 Hz			
THDU (@Linear Load)	< 2%			
Switch Time	<10 ms			
	AC Input			
Max Input Apparent Power	7.2kVA	10kVA	10kVA	10kVA
	Efficiency			
Max Efficiency	97.4%	97.5%	97.4%	97.6%
European Efficiency	96.5%	96.7%	96.7%	97.1%
	Connectivity			
Internet Connectivity	Wi-Fi, Bluetooth, Ethernet, 4G (Optional)			
	Other			
Weight	19 kg			
W×H×D Dimensions (mm)	670 × 335 × 150			
Noise	≤ 30 dB ¹			
Mounting Options	Ground or Wall ²			
Operation Temperature	-25°C to 60°C ³			
Relative Humidity	0 to 100%			
Max Operating Altitude	Up to 4,000 m, Power Derates from 2,000 m			
Ingress Protection Rating	IP66			
Warranty	10 Years Limited ⁴			
	Compliance Information (More Information Available Upon Request)			
Grid Connection Certifications	VDE-AR-N 4105, DIN VDE V 0124-100 (VDE V 0124-100), CEI 0-21, G99/1-9, C10/C11, NTS 2021 V2.1, UNE 2170021, UNE 217002, AS/NZS 4777.2			
Safety	EN IEC 62109-1,EN IEC 62109-2, AS 60947.3			
EMC	EN IEC 61000-6-1, EN IEC 61000-6-3			

Disclaimer: The product specifications and details contained in this brochure are based on preliminary information and are subject to change without notice. The actual product features and specifications may vary upon its official release.
¹Tested in Anker laboratory at 1 m distance and typical scenarios.
²Additional rack required for wall mounting.
³Power derates once ambient temperature exceeds 45°C.
⁴Refer to Anker SOLIX X1 Home Energy Storage System Warranty Policy for details.

| Power Module Hybrid Three-Phase Energy Storage System



Model	X1-H5K-T	X1-H8K-T	X1-H10K-T	X1-H12K-T
	Battery Input			
Battery Type	LFP			
Voltage Range	350 - 450VDC			
Battery Capacity	5 kWh - 30kWh			
	PV Input			
Max Input Power	10kW	16kW	20kW	24kW ¹
Max Input Voltage	1,000VDC			
MPPT Voltage Range	140 - 950VDC			
Start-Up Voltage	160VDC			
Rated Input Voltage	600VDC			
Max Input Current	16 / 16ADC			
Isc PV Array Short Circuit Current	20 / 20ADC			
Number of MPPTs	2			
Number of Strings per MPPT	1			
	AC Output (On-Grid)			
Rated Output Power	5kW	8kW	10kW	12kW
Max Output Apparent Power	5.5kVA	8.8kVA	11kVA	13.2kVA
Max Units in Parallel	6			
Rated Output Voltage	220/380VAC, 230/400VAC, 3L+N+PE			
Rated Frequency	50 / 60 Hz			
Power Factor	0.8 ind - 0.8 cap			
THDI (@Rated Power)	< 2%			
	AC Output (Off-Grid)			
Rated Output Power	5kW	8kW	10kW	12kW
Max Output Apparent Power	5.25kVA	8.4kVA	10.5kVA	12.6kVA
Peak Output Apparent Power (Duration)	10kVA (10 s)	16kVA (10 s)	20kVA (10 s)	20kVA (10 s)
Max Units in Parallel	6			
Rated Output Voltage	220/380 VAC, 230/400VAC, 3L+N+PE			
Rated Frequency	50 / 60 Hz			
THDU (@Linear Load)	< 2%			
Switch Time	< 10 ms (Typical)			
	AC Input			
Max Input Apparent Power	20kVA			
	Efficiency			
Max Efficiency	97.9%	98.0%	98.0%	98.0%
European Efficiency	96.0%	97.1%	97.4%	97.5%
	Connectivity			
Internet Connectivity	Wi-Fi, Bluetooth, Ethernet, 4G (Optional)			
	Other			
Weight	30 kg			
W×H×D Dimensions (mm)	670 × 450 × 150			
Noise	≤ 30 dB ²			
Mounting Options	Ground or Wall ³			
Operation Temperature	-25°C to 60°C ⁴			
Relative Humidity	0 to 100%			
Max Operating Altitude	Up to 4,000 m, Power Derates from 2,000 m			
Ingress Protection Rating	IP66			
Warranty	10 Years Limited ⁵			
	Compliance Information (More Information Available Upon Request)			
Grid Connection Certifications	VDE-AR-N 4105, DIN VDE V 0124-100 (VDE V 0124-100), Austria OVE Directive R25 deviation based on VDE 4105, EN 50549-1 / 2, EIFS 2018:2, RfG, NC RfG, PTPIREE, C10/11, UNE 217002, PPDS: 2022, AS/NZS 4777.2			
Safety	EN IEC 62109-1,EN IEC 62109-2			
EMC	EN IEC 61000-6-1:2019, EN IEC 61000-6-3:2021, EN 62920:2017/A1:2021			

Disclaimer: The product specifications and details contained in this brochure are based on preliminary information and are subject to change without notice. The actual product features and specifications may vary upon its official release.
¹Power derates once ambient temperature exceeds 35°C.
²Tested in Anker laboratory at 1 m distance and typical scenarios.
³Additional rack required for wall mounting.
⁴Power derates once ambient temperature exceeds 45°C.
⁵Refer to Anker SOLIX X1 Home Energy Storage System Warranty Policy for details.

| Battery Module



Model	X1-B5-H
Performance Specifications	
Battery Energy ¹	5kWh
Battery Type	Li-ion (LFP)
Battery Voltage Range	350 - 550VDC
Maximum Charge / Discharge Power	3kW
Maximum Charge / Discharge Current	7.6A
Other	
W×H×D Dimensions (mm)	670 × 360 × 150
Weight	51 kg
Ingress Protection Rating	IP66
Operating Temperature	-20°C to 55°C
Maximum Operating Altitude	Up to 4,000 m, Power Derates from 2,000 m
Warranty	10 Years ²
Compliance Information	
Certifications	IEC 62619, IEC 62040-1, VDE-AR-E 2510-50, UN38.3

¹The initial capacity (design capacity) of an expansion battery is 5 kWh. The actual capacity may vary depending on environmental conditions, such as temperature, transportation methods, and storage conditions.
²Refer to Anker SOLIX X1 Home Energy Storage System Warranty Policy for details.

| System Parameters Hybrid Single-Phase Energy Storage System



Battery Modules	1	2	3	4 ²	5 ²	6 ²
Energy Capacity	5kWh	10kWh	15kWh	20kWh	25kWh	30kWh
Weight ¹	73.5 kg	124.5 kg	175.5 kg	232 kg	283 kg	334 kg
W×H×D Dimensions (mm) ²	670 × 765 × 150	670 × 1,125 × 150	670 × 1,485 × 150	670 × 1,485 × 150 670 × 482 × 150	670 × 1,485 × 150 670 × 842 × 150	670 × 1,485 × 150 670 × 1,202 × 150

¹Includes floor mounting base and top cover.
²Two column installation.

| System Parameters Hybrid Three-Phase Energy Storage System



Battery Modules	1	2	3	4 ²	5 ²	6 ²
Energy Capacity	5kWh	10kWh	15kWh	20kWh	25kWh	30kWh
Weight ¹	84.5 kg	135.5 kg	186.5 kg	243 kg	294 kg	345 kg
W×H×D Dimensions (mm) ²	670 × 880 × 150	670 × 1,240 × 150	670 × 1,600 × 150	670 × 1,600 × 150 670 × 482 × 150	670 × 1,600 × 150 670 × 842 × 150	670 × 1,600 × 150 670 × 1,202 × 150

¹Includes floor mounting base and top cover.
²Two column installation.

| Power Sensor



Model	DTSU666		DDSU666
	Power Supply		
Grid Connection Type	3P4W		1P2W
Frequency	50 / 60Hz		
Nominal Voltage	3× 220 / 380V - 3× 240 / 415V		220 - 240V
	Measurement Range		
Current Range	0 - 100A	0 - 250A	0 - 100A
Voltage Range	3× 57.7 / 100V - 3× 288 / 500V		100 - 276V
	Accuracy		
Voltage Accuracy	Class B (Class 1)		
Current Accuracy			
Power Accuracy			
Frequency Accuracy			
	General Specifications		
H×W×D Dimensions (mm)	100 × 72 × 65.5		100 × 36 × 65.5
Weight	0.3 kg		0.18 kg
Storage Temperature Range	-40°C to 70°C		
Operating Temperature Range	-25°C to 55°C		
Relative Humidity Range	0 to 95%		
Ingress Protection Rating	IP51		
Installation Method	DIN Rail 35 mm		
	Communication		
Interface	RS485		
Baud Rate	1200/2400/4800/9600/19200/38400/115200 bps		1200/2400/4800/9600/ 19200/115200 bps
Protocol	Modbus RTU		
	Other		
Accessories	3 CT 100 A / 40mA (6 m)	3 CT 250 A / 50mA (6 m)	

| WLAN Dongle

Model	DG-WF-H
Standard	2.4 GHz 802.11b/g/n Compatibility
Security	802.11i (WPA, WPA2)
Data Rate	Up to 150 Mbps (Theoretical Value)
TX Power	17 dBm @ CCK, 16.5 dBm @ OFDM, 16.5 dBm @ MCS
Sensitivity	-88 dBm @ CCK, -75 dBm @ OFDM, -69 dBm @ MCS
	Ethernet
Standard	IEEE 802.3 for 10BaseT, IEEE 802.3u for 100BaseTX
Speed	10/100 Mbps, Auto MDI/MDIX
	Bluetooth
Standard	Bluetooth v4.2 BLE
Range	10 m
Speed	1 Mbps (Theoretical Value)
	Interface
RS-485	1 Port
Input Voltage	8VDC
	Environment
Operating Temperature	-40°C to 70°C
Storage Temperature	-40°C to 85°C
Humidity	5% to 95% Non-Condensing
	Connector
Pin 1	V+
Pin 2	RS-485 B (D-)
Pin 3	RS-485 A (D+)
Pin 4	GND
	Mechanical Specifications
Dimensions	102 × 50 × 35 mm
Ingress Protection Rating	IP65

| Mobile Dongle

Model	VD-606L8-WB-AK
	Cellular Networks
Frequencies	LTE UE-Cat.4, LTE FDD: B1/B3/B5/B7/B8/B20/B28, LTE TDD: B38/B40/B41, WCDMA: B1/B5/B8, GSM: 900/1800 MHz
Speed	Max 150Mbps (DL), Max 50Mbps (UL)
Antenna	Built-in, LDS, Gain: 3.87 dBi
TX Power	19 dBm ± 2 dB
Sensitivity	-92dBm ± 2dB at FDD of 10 m
	Bluetooth
Standard	Bluetooth v4.2 BLE Specification
Operational Range	Max 30 m (Theoretical Value)
Speed	1 Mbps (Theoretical Value)
	Interface
RS-485	1
Power	Input Votage: 5 - 12VDC, Consumption: 4.5W
	Environment
Operating Temperature	-40°C to 70°C
Storage Temperature	-40°C to 85°C
Humidity	5% to 95% Non-Condensing
	LED Indicators
Power	Off: Powered Off, On: Power Supplied from DC Input
Network	Off: Powered Off, On: Connected to Internet, Flashing: Disconnected from Internet
	Mechanical
W×H×D Dimensions (mm)	107 × 49 × 36.8
Case Material	Plastic
Ingress Protection Rating	IP65
	Warranty
Dongle Warranty	5 Years ¹

¹Refer to Anker SOLIX X1 Home Energy Storage System Warranty Policy for details.

| Anker (User App)

	App Features
Operating System	Android and iOS
Rapid Battery Charging	Yes
SOC Setting	0 - 100%
Power Sources Monitor	Working Status, Power Flow
Historical Data	Daily, Weekly, Monthly, Yearly
Grid Charging	Yes
Account Security	Password Verification Support
	Self-Consumption
EMS Modes	Time of Use
	Rapid Battery Charging
EV Charger	Green Electricity Charging, Fast Charging, Smart Charging
Heat Pump	Manual Mode, Automatic Mode, Smart Mode

| Anker SOLIX Professional (Installer App)

	App Features	
Power Site Management	Power Site Lists	Search / System ID / Device Location / System Name
		Add System / Delete System
System Build	Collect Owner Details	Location Map
	Search Device (Via Bluetooth)	Self-Search / Scan Code to Connect
	Configure System Network	Multiple Network Connections
System Configuration	Select Grid Code	Grid Parameters
	Meter and DI/DO Configuration (For EU Hardware)	Meter and DI/DO Configuration
System Testing	Power On System	Power On
	Wiring Inspection	Communication Fault Detection
		Ground Fault Detection
	CT Connection Detection	CT Self-Adaption
	On-Grid and Off-Grid Functional Testing	On-Grid Functional Testing
		Off-Grid Functional Testing
Post Commissioning	Delivery	Validation Code / Enter Email
	External Device Configuration	Heat Pumps and Generators

| Anker SOLIX Professional (O&M Portal)

	Web Features	
Intelligent Monitoring	System List	System Status
		System Data
		Battery Installation Data
		Map
		System List Display
	System Map	Search
		Map
		Basic Data
		System Monitor Entry
		System Overview
	System Monitoring	EV Charger
		Energy Statistics
		Device Details
		Fault Information
Fault Management	Fault Information Management and Push	Advanced Parameter Settings
		Fault List
		Fault Push Configuration
System Management	User Management and Permission Allocation	Fault Push Information
		User Management
		Role Type Management
		Role Management
		Organization Management



Anker in Europe 2024

In Europe, For Europe

50+ Employees

4 Offices (4 More Planned)

11 Warehouses



Local Sales Team



Local Warehouses



Local Service Team



Local Call Center

