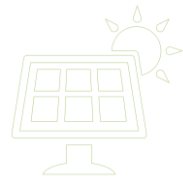




MIC 750-3300 TL-X



Smart & Powerful MIC



MIC 750-3300 TL-X



OLED display



Touch pad



AFCI



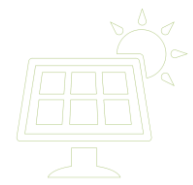
30% Compact
& lighter



Natural cooling



Higher Yield



1

MPPT Range
50-500V/65-550V



4

Efficiency
97.6%

Start Voltage
50V/80V

2

3

DC/AC Ratio
1.4

Easy Installation



9.1kg



30%+ smaller and lighter



6.2kg

Compact, Smart & Optimized Design

User Friendly



Touch Button

- Excellent experience
- Touch to configure

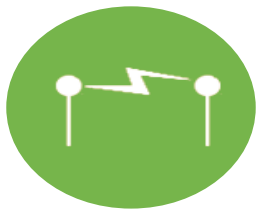
OLED Display

- Clearly
- Low Consumption

Natural cooling

- Low noise
- Low consumption

Safe & Reliable



AFCI Optional



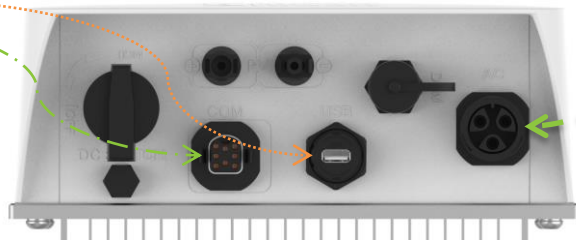
**Integrated
DC Switch**



**Reserve
Protection**



Convenient connection



Quick Release Plug

- Quick installation and removal

COM Port

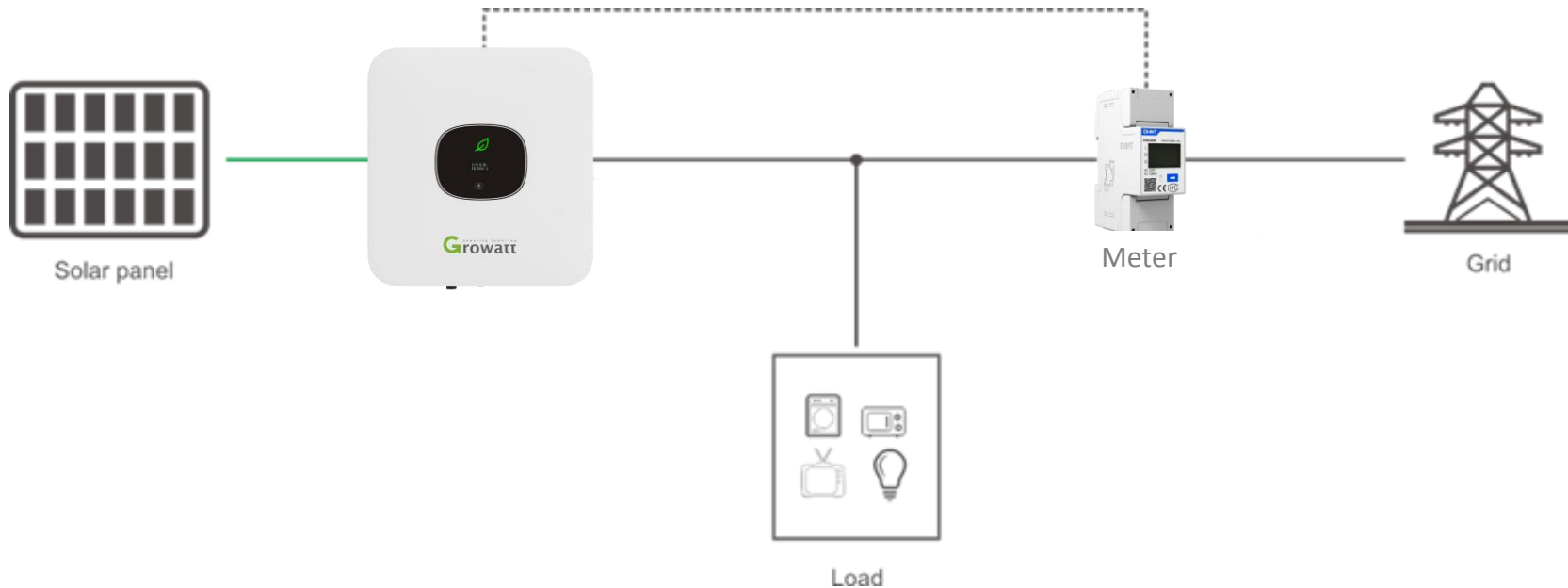
- RS485 and meter connection
- DRM or Logical interface

USB Port

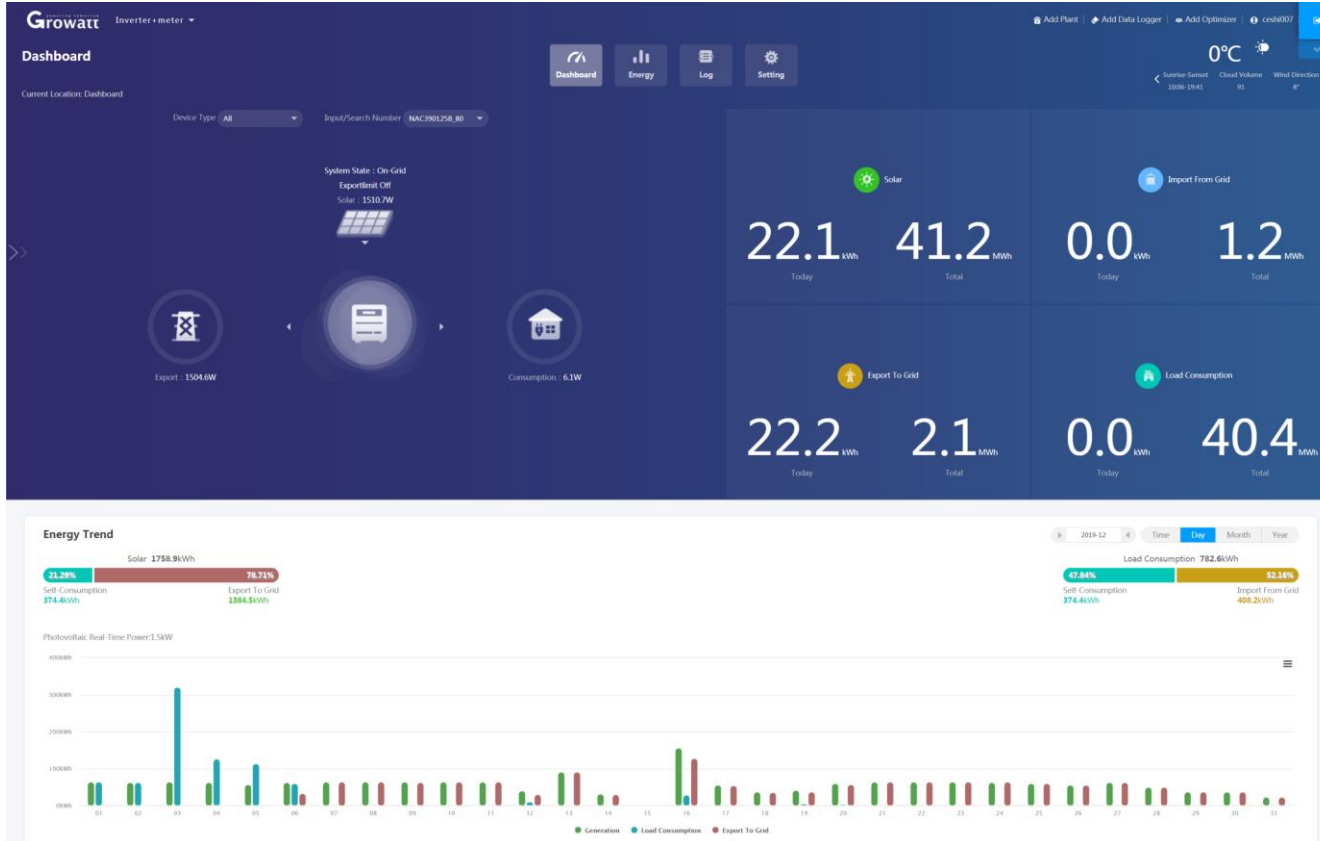
- Monitor: WIFI-X, Shine LAN-X, ShineLink-X
- USB-WiFi/Firmware update

Dynamic export control

Dynamic export control with a meter



Self-Consumption Monitoring



Easy Maintenance

✓ Smart Remote Maintenance

Remote Configuration

Set Inverter

Inverter

Serial number: 3F16160040 Alias: 3F16160040

Port: 4KZ47142C1 Attributes: AH1.0/ahba0101/1110372

Command

- Set PV on/off
- Set save PF commands
- Set active power rate
- Set reactive power rate %
- Set PF value (-0.8 - -1/0.8 - 1)
- Set inverter time
- Set grid voltage high
- Register Value

Cancel Confirm

Remote FW Update

Growatt online upgrade system

Configuration upgrade Upgrading Upgrade record

Datalog Inverter Date - Search for

No.	Inverter	Datalog	Time	Firmware version	Internal version	Upgrade	Path
1	FPA2702005	4KZ370139D	2017-10-09 16:28:19	TH1.0	thaa0504	datalog connect time out	/ShinePano/Rudolf - Growatt Germ.
2	FPA2702005	4KZ370139D	2017-10-09 16:08:53	TH1.0	thaa0504	user cancel or datalog connect tim.	/ShinePano/Rudolf - Growatt Germ.
3	FPA2702005	4KZ370139D	2017-10-09 15:28:22	TH1.0	thaa0504	downloading firmware to datalog...	/ShinePano/Rudolf - Growatt Germ.
4	FPA2702005	4KZ370139D	2017-10-09 15:28:22	TH1.0	thaa0504	set datalog 4KZ370139D set pv de...	/ShinePano/Rudolf - Growatt Germ.
5	FPA2702005	4KZ370139D	2017-10-09 15:28:22	TH1.0	thaa0504	set datalog 4KZ370139D set pv de...	/ShinePano/Rudolf - Growatt Germ.
6	FPA2702005	4KZ370139D	2017-10-09 15:30:59	TH1.0	thaa0504	New inverter firmware upgrade	/ShinePano/Rudolf - Growatt Germ.
7	HEB1713001	4KZ3646089	2017-10-01 18:28:40	TH1.0	thaa0507	The user canceled the upgrade	/ShinePano/thaa-XX07/thaa-xx07 ...
8	HEB1713001	4KZ3646089	2017-10-01 18:28:30	TH1.0	thaa0507	逆变器升级成功	/ShinePano/thaa-XX07/thaa-xx07 ...
9	HEB1713001	4KZ3646089	2017-10-01 18:28:25	TH1.0	thaa0507	逆变器升级成功	/ShinePano/thaa-XX07/thaa-xx07 ...
10	HEB1713001	4KZ3646089	2017-10-01 18:28:21	TH1.0	thaa0507	逆变器升级成功	/ShinePano/thaa-XX07/thaa-xx07 ...

Growatt service engineer can handle **60%+** problems by Remote Configuration & FW Update

Easy Maintenance

✓ Local configuration : USB-Wifi

- **Local APP debugging** : Check the real-time data and set parameter via local Wi-Fi network



- **Plug and play** : Update inverter FW quickly (< 200s)

Smart Monitoring

Intelligent Solution

Monitoring Devices

Monitoring Platform



ShineLink-X



ShineWiFi-X,
ShineLan-X,
Shine GPRS-X



ShinePhone APP



ShineServer / OSS system



www.ginverter.com



Copyright© 2019 Growatt New Energy Technology CO., LTD
All Rights Reserved. The information contained in this document is only for
reference purpose and subject to change by company officials.