

SOLAR'S MOST TRUSTED



# REC ALPHA<sup>®</sup> PURE-RX SERIES ALPHA EXPLAINED



COMPACT PANEL SIZE

9 A MODULE CURRENT  
COMPATIBLE WITH MLPE

470 WP

226  $\frac{W}{M^2}$



ELIGIBLE



LEAD-FREE  
ROHS COMPLIANT

EXPERIENCE



PERFORMANCE

The REC Alpha Pure-RX Series builds on the successes of previous REC Alpha products in uniting leading cell technology to create a revolutionary, powerful and reliable solar panel that hits the sweet spot in terms of power, weight and size:

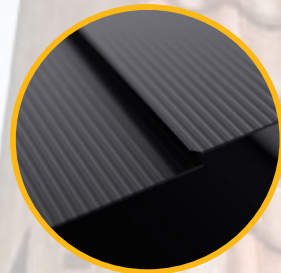


### Heterojunction cells

- Combines the best of modern cell technology
- Highly efficient cells for high performance
- Larger cells capture more light for more energy generation

### N-type technology = more power

- No initial power loss (no LID)
- You get the power you pay for



### Advanced gapless cell connections

- Eliminates soldering for better build quality
- Reduces cell stress for long-term durability
- Increases power and keeps panel compact

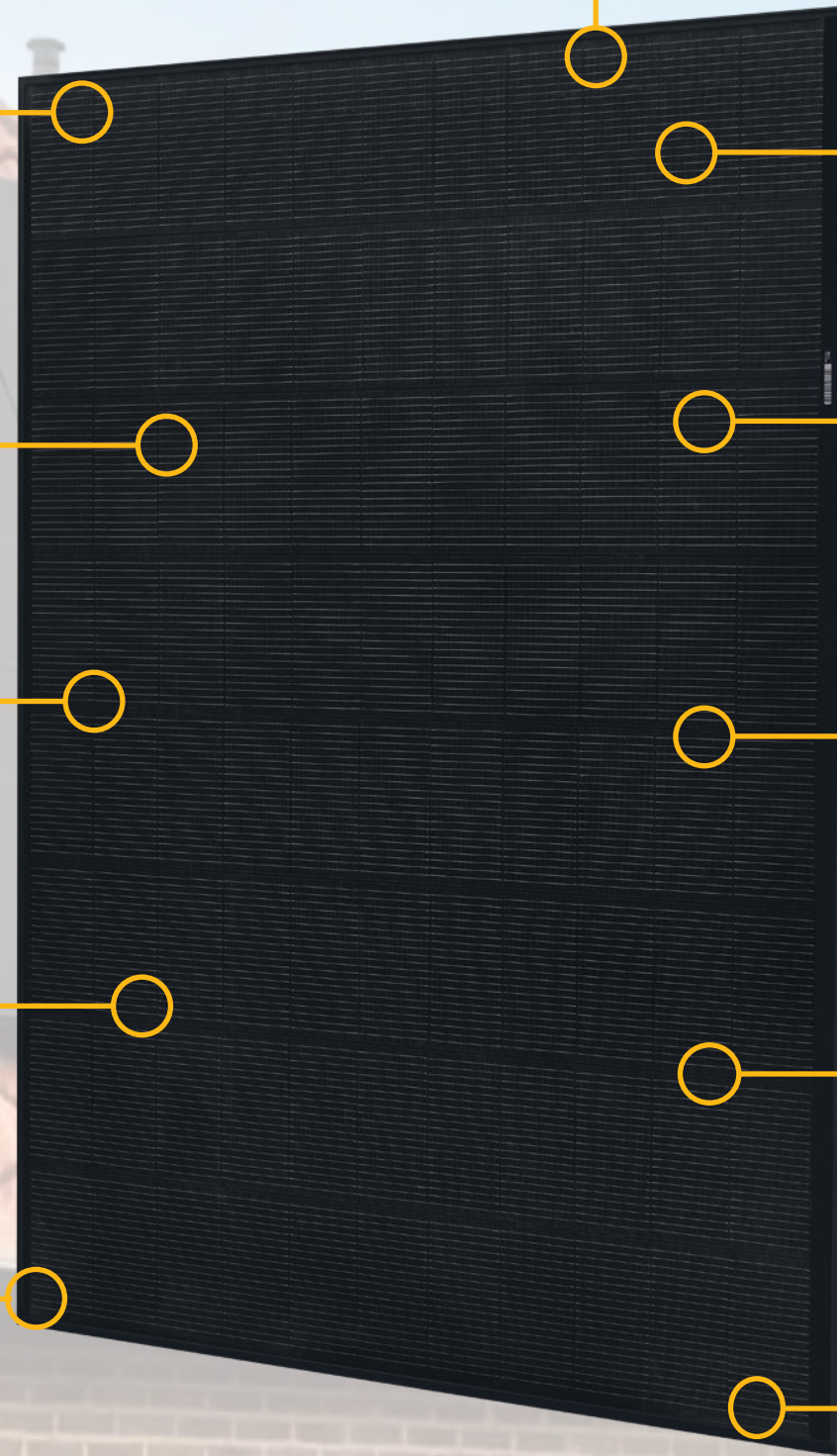
### Higher light transmission

- Special anti-reflective glass increases light transmission for higher power



### Guaranteed better durability

- Withstands up to 7000 Pa
- Better protection against harsh weather



### Improved looks

- Gapless cells for great aesthetics
- Full black appearance for an elegant look

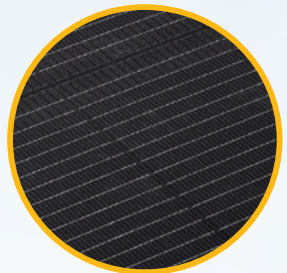


### High power density of 226 W/m<sup>2</sup>

- Generates more clean energy from available rooftop space

### Higher efficiency at the hottest times

- Leading temperature coefficient for more production when the sun shines strongest
- Better performance in hot conditions



### Low current through 4-section layout

- Cell layout in 4 sections keeps panel current around 9 A
- Ensures easy compatibility with modern optimizers and microinverters
- Improves output under shaded conditions

### Environmentally-friendly

- Lead-free (RoHS compliant)
- Manufacturing with minimal carbon footprint

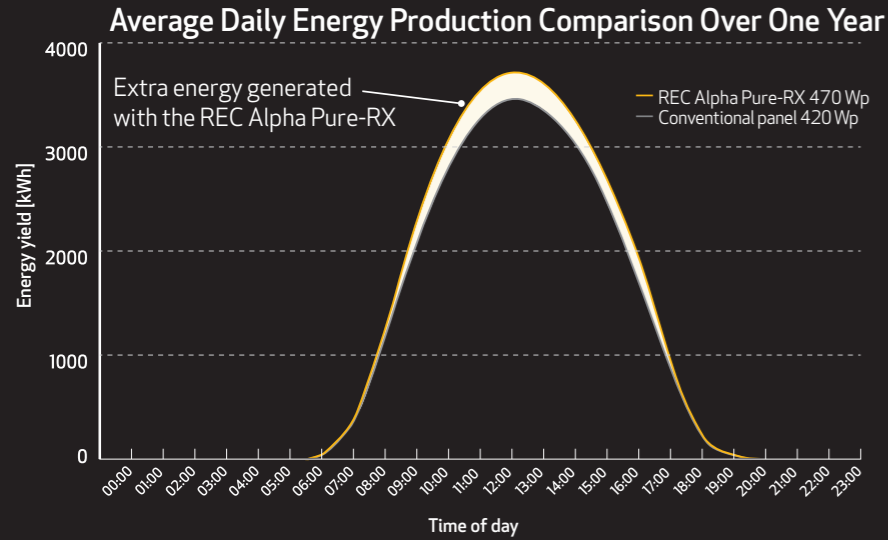


### Exceptional quality

- Made in REC's state of the art, energy efficient facility in Singapore
- Highly automated production for improved efficiency and reliability
- Consistently one of the lowest warranty claims rate in solar

## GREATER ANNUAL YIELDS FROM DAWN TO DUSK

The REC Alpha Pure-RX packs in more energy than ever before. With no LID, a leading temperature coefficient and its high power density, it is ideal for increasing energy yields and making the most of available rooftop space.



Calculations based on simulation results for full calendar year, based on an 12 kWp system in Palm Springs, CA, USA. Peak REC Alpha Pure-RX energy yield difference at midday: +6%, with an overall greater annual yield of 5.7%. Performance may vary dependent on location.

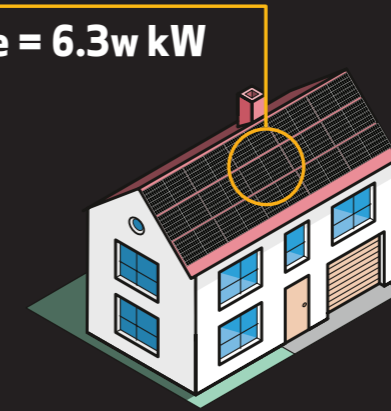
# MORE POWER WITH THE REC ALPHA PURE-RX!

## MAXIMIZE SYSTEM POWER FOR MAXIMUM SAVINGS

Optimum use of space is key to a good solar installation. The dimensions of the REC Alpha Pure-RX enable you to pack in as much power as possible and generate more energy.

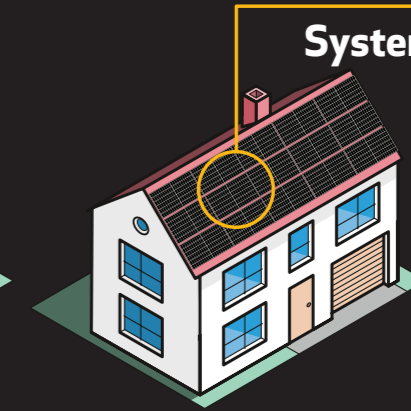
15 x 420 Wp conventional panels (> 1.94 m<sup>2</sup> panel area):

**System size = 6.3w kW**



14 x 470 Wp REC Alpha Pure-RX (2.08 m<sup>2</sup> panel area):

**System size = 6.6 kW**

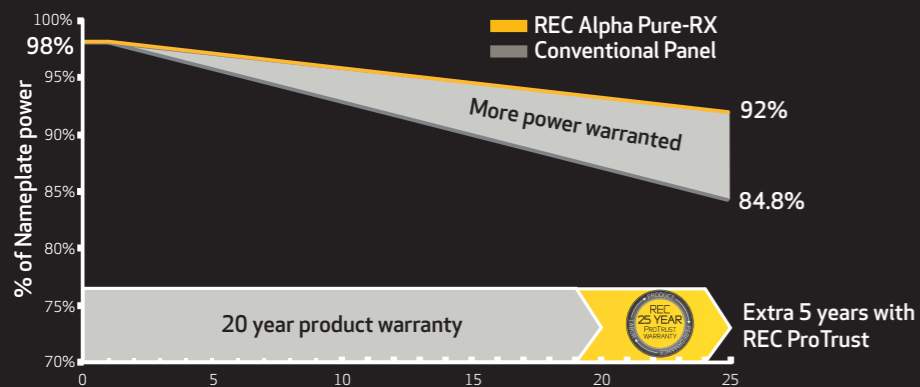


Based on an available roof area of 30 m<sup>2</sup>.

The comparison is clear: in a regular residential installation, the REC Alpha Pure-RX offers more power than conventional panels for more energy and more savings.

## MORE WARRANTED POWER AFTER 25 YEARS

REC's consistently low claims rate justifies an outstanding warranty which reflects this leadership and supports our premium product quality.



Exclusive to REC Certified Solar Professionals, the REC ProTrust Warranty offers enhanced product and labor coverage\*, ensuring peace of mind and a lifetime of high power generation:

- 25 years performance warranty
- 25 years product warranty
- Up to 25 year labor warranty\*

\*Conditions apply. See [www.recgroup.com/protrust](http://www.recgroup.com/protrust) for more details

## LEADING THE WAY TO A MORE SUSTAINABLE FUTURE

Lead and other toxins can be found in almost all solar panels today. That means all the panels produced in 2021 alone will potentially add around 11,000 tons of lead to the environment in the future! Using advanced manufacturing techniques, the REC Alpha Pure-RX has removed the lead from all components so that it is compliant with Restriction of Hazardous Substances regulations (RoHS) across the world. This sets the pace in sustainability for solar and shows that a clean energy future without lead and toxins is possible.

**Plant the seed** for a sustainable future

**No toxic leakage** of lead after recycling

**Our commitment** to a lead-free and toxin-safe future



**Cuts risks** to humans and animals

**Certified lead-free** RoHS-compliant

**Do even more** than just producing clean energy



# REC - SOLAR'S MOST TRUSTED

REC Group is an international pioneering solar energy company dedicated to empowering consumers with clean, affordable solar power through high-quality solar panels with a leading power density. As Solar's Most Trusted, REC is known for its patented innovations and multiple award-winning products with reliable long-term performance. The cornerstone for REC's strong reliability is advanced and highly efficient manufacturing using Industry 4.0 practices. Founded in 1996 in Norway, REC has always been committed to a low carbon footprint in its solar materials and panels. REC is headquartered in Norway with operational headquarters in Singapore and regional hubs in North America, Europe, and Asia-Pacific.



www.recgroup.com



Rev- A 09.23